

# The potential utilization of non-timber vascular plants in the karst area of Ayah Village, Kebumen District, Central Java, Indonesia

SISCA INDRIYANI<sup>1</sup>, DEVI MAYANG AURINA<sup>1</sup>, MUHAMMAD FADHIL RAMADHAN<sup>1</sup>,  
FAYZA RACHMALIA<sup>1</sup>, MUTHI'AH DZAKIYYATUL FAUZIYYAH<sup>1</sup>, AQRA DANIAL FATURRAHMAN<sup>1</sup>,  
IRFAN ABU NAZAR<sup>1</sup>, ANISA SEPTIASARI<sup>2</sup>, DARLINA MD. NAIM<sup>3</sup>, AHMAD DWI SETYAWAN<sup>1,4</sup>✉

<sup>1</sup>Department of Biology, Faculty of Mathematics and Natural Sciences, Universitas Sebelas Maret. Jl. Ir. Sutami 36A, Surakarta 57126, Central Java, Indonesia. Tel./Fax.: +62-271-663375, ✉email: volatileoils@gmail.com

<sup>2</sup>Biodiversitas Study Club, Department of Biology, Faculty of Mathematics and Natural Sciences, Universitas Sebelas Maret. Jl. Ir. Sutami 36A, Surakarta 57126, Central Java, Indonesia

<sup>3</sup>School of Biological Sciences, Universiti Sains Malaysia. 11800 Penang, Malaysia

<sup>4</sup>Biodiversity Research Group, Sebelas Maret University. Jl. Ir. Sutami 36A Surakarta 57126, Central Java, Indonesia

Manuscript received: 25 December 2022. Revision accepted: 8 April 2023.

**Abstract.** *Indriyani S, Aurina DM, Ramadhan MF, Rachmalia F, Fauziyyah MD, Faturrahman AD, Nazar IA, Septiasari A, Naim DMD, Setyawan AD. 2023. The potential utilization of non-timber vascular plants in the karst area of Ayah Village, Kebumen District, Central Java, Indonesia. Intl J Trop Drylands 7: 51-61.* Karst vegetation has unique characteristics in its shape and species composition. As a result, karst plant communities have a high ability to adapt to environmental stress. In addition to ecological functions, vegetation that grows in karst areas also has the potential as natural medicine, food ingredients, and materials for folk traditions. This study aims to determine the diversity and potential utilization of non-timber vascular plants in the karst area of Ayah Village, Kebumen, Central Java, Indonesia. This study used a survey method, namely direct observation, by exploring the Ayah Forest area to observe the studied object, namely vascular plants. The results showed 44 plant families of 111 species in the Ayah Forest area. Vascular plants in the Ayah Forest area are mostly from Fabaceae and Poaceae families. Therefore, five habitus types grow there, including trees, herbs, shrubs, epiphytes, and vines. The vascular plants found during the research have different potencies. In this study, eight prospects could be utilized from vascular plants in Ayah Forest: ornamental plants, medicinal plants, food ingredients, beverage ingredients, flavorings, natural coloring, animal feed, and woven crafts. The potential use of vascular plants in the Ayah Forest is most widely used as medicine.

**Keywords:** Ayah Forest, biodiversity, karst, non-timber, vascular plants

## INTRODUCTION

Karst has unique hydrological conditions and landscapes caused by rock dissolution and secondary porosity development (Nugroho and Paripurno 2019). Karst landscapes are formed from the erosion of rock by surface waters. Most karst area comprises carbonate rocks, mainly limestone and dolomite (Sulastoro 2013). The landscape of the karst area usually has steep slopes, many basins, prominent and irregular limestone, and caves. Karst also has a continuous underground river system. Karst ecosystems are fragile landscapes; if this ecosystem is disturbed, it will take a very long time to recover (Widyaningsih 2017). One of the crucial factors in restoring damaged karst ecosystems and preserving karst landscapes is maintaining biodiversity in karst areas because biodiversity is the key to regional ecological succession (Li et al. 2013).

In addition, the high plant diversity in karst areas influences the hydrological system and soil formation. The variety of plants in the karst area plays a role in water absorption, so the function of karst underground river springs can be appropriately maintained. For the karst area to function optimally as a water reservoir, vegetation can shade the karst and absorb much water (Sugita et al. 2015).

Karst vegetation has unique characteristics in its shape and species composition. Vegetation forms in karst areas usually have sparse crowns attached to cliffs (Marwiyati 2012), consisting of plants that grow naturally and are cultivated. As a result, Karst plant communities can adapt to environmental stress (Nasrudin and Parikesit 2020). In addition to ecological functions, vegetation that grows in karst areas has another potential: natural medicine, food ingredients, toy making, and materials for folk traditions (Lumpert and Kreft 2017).

Indonesia has the potential for karst landscape areas of around 20% of its land area (Widyastuti et al. 2019). One of the karst areas in Indonesia is the South Gombong karst area in the Kebumen District, such as the Ayah Karst of Ayah Subdistrict. The Ayah karst area presents the main typological characteristics of coastal karst hills, with their geology consisting of relatively thin layers of limestone. The Ayah karst area consists of Miocene limestone, which underwent uplift and karstification at the end of the Pliocene. The karst of Ayah and surrounding areas is characterized by harmonious karst formations and closed basins (Haryono et al. 2017). The karst forest area in South Gombong has a moderate to dense vegetation density with a percentage of 90% and a rare to very rare vegetation density with a ratio of 10%. The vegetation of the South

Gombong karst forest area also consists of cultivated plants. This is because the South Gombong karst forest area is close to residential areas (Suhendar et al. 2018).

According to Minister of Forestry Number 35 of 2007, non-timber forest products are vegetable and animal products, with their derivative products and cultivation, except for wood originating from forests. Non-timber forest products are by-products of plants, such as sap, leaves, skin, and fruit (Batubara and Affandi 2017). Local communities can utilize most non-timber plants as ornamental and food ingredients (Hadi et al. 2016). Moreover, non-timber forest plants are necessary to support increased community welfare and income without reducing forest ecological functions (Mansur et al. 2018). At the same time, each vascular plant type holds a unique potential. However, few studies have examined the possibility of vascular plant groups in the Ayah karst area. Therefore, this study aims to determine the diversity and potential utilization of non-timber vascular plants in the karst area of Ayah Village, Ayah Sub-district, Kebumen, Indonesia.

## MATERIALS AND METHODS

### Study area

The research was carried out in November 2022. Observations were made in the karst forest area, Ayah Village, Ayah Sub-district, Kebumen District, Central Java, Indonesia (Figure 1). Ayah Sub-district is one of the sub-districts in Kebumen District, with sea areas apart from their mountainous. Ayah Sub-district is included in the South Gombong karst area, at coordinates of -7.726532, 109.399676 (Central Bureau of Statistics for Kebumen District 2020). Ayah Sub-district in the inland and mountainous areas has a livelihood as a farmer, while those in the low-coastal areas have a livelihood as fishermen. Ayah Sub-district consists of 18 villages, especially Ayah

Village. Ayah Village is located at the western end of Kebumen District and is directly adjacent to Cilacap District. Ayah Sub-district is known to the public for its several tourist objects (Faozi and Santoso 2020), which are famous for their natural potential, such as Logending Beach, Pasir Beach, Jatijajar Cave, and Petruk Cave. In Ayah Forest, Pasir Beach around Ayah Village has various plant potential.

### Procedures

#### Observation

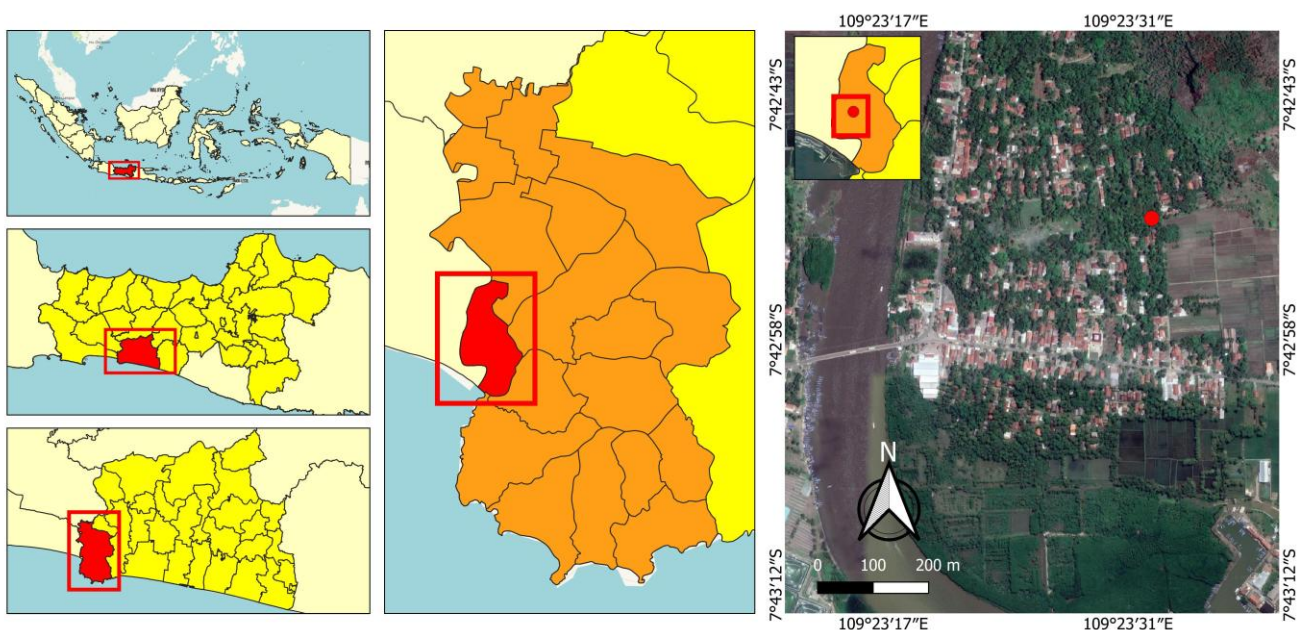
Data were collected using survey and observation methods, namely direct observation by exploring the study area to observe the object to be studied, namely vascular plants (Li et al. 2022). First, each plant found in the Ayah Forest area is recorded, starting with the plant type, its special characteristics, and its habitus. These plants' characteristics are then documented through photos to facilitate identification.

#### Plant identification

Plants are identified based on the type, characteristics, and habitus of each plant species obtained from observations. The identification information mostly used internet base identifiers, such as plantamor.com, theplantlist.org, identify.plantnet.org, gbif.org, and powo.science.kew.org. If the name of the plant species is known, then its potential is sought based on Table 1 for a list of literature.

#### Data analysis

The data obtained were analyzed descriptively using a qualitative approach, then explained more concisely and clearly in tabular form by attaching pictures of observations. As a result, the information or data written down was more valid and strengthened this research results.



**Figure 1.** Location of Ayah Village Forest, Ayah Sub-district, Kebumen, Central Java, Indonesia

**RESULTS AND DISCUSSION**

**Vascular plants in the karst area of Ayah Village**

From research conducted in the karst area of Ayah Village, 111 species of vascular plants were found consisting of 44 families. The family most often found in Ayah Village Forest is the Fabaceae or the legume family (Figure 2). There are 12 species of plants of the family Fabaceae found in the Ayah karst area. Based on data found by Faida et al. (2018), four plant tribes are native karst, namely Euphorbiaceae, Moraceae, Fabaceae, and Palmae. The Fabaceae family is more prevalent because this group of plants is drought-tolerant and can live in tropical and subtropical climates (Dimmit 2014). Based on literature studies, the Fabaceae family was found to have many potential uses, such as medicinal plants, ornamental plants, animal feed, and foodstuffs (Table 1). Moreover, the Fabaceae family has potential as green plants, agricultural production plants, etc. (Adelita and Dharmono 2018). The Poaceae family is also found in the karst of Ayah Forest with ten species, widely known as a group of grasses, and the fourth largest family in the plant world (Sagar et al. 2018). Poaceae have an important role in resisting erosion

at the cliff's foot. In addition, Poaceae are easy to grow and drought tolerant (Hirman et al. 2021).

Habitus is divided into five types: trees, herbs, shrubs, epiphytes, and vines. This study found herbs habitus were more dominant than others in Ayah Village Forest (Figure 3). The high percentage was herbs (49%), followed by shrubs (20%), trees (19%), epiphytes (9%), and the last is vines (3%).

Based on Figure 4, the highest potential utilization of non-timber vascular plants is medicinal plants 74 species, followed by ornamental plants 19 species; foodstuffs 17 species; animal feed 13 species; beverage ingredients four species; flavoring two species; natural coloring one species; and one species of woven craft.

**Plant potential**

The vegetation around Ayah Village Forest has possibilities that the surrounding environment can be utilized. The results showed nine potential plant uses: medicinal, ornamental plants, food ingredients, animal feed, natural dyes, flavorings, beverage ingredients, and woven crafts.

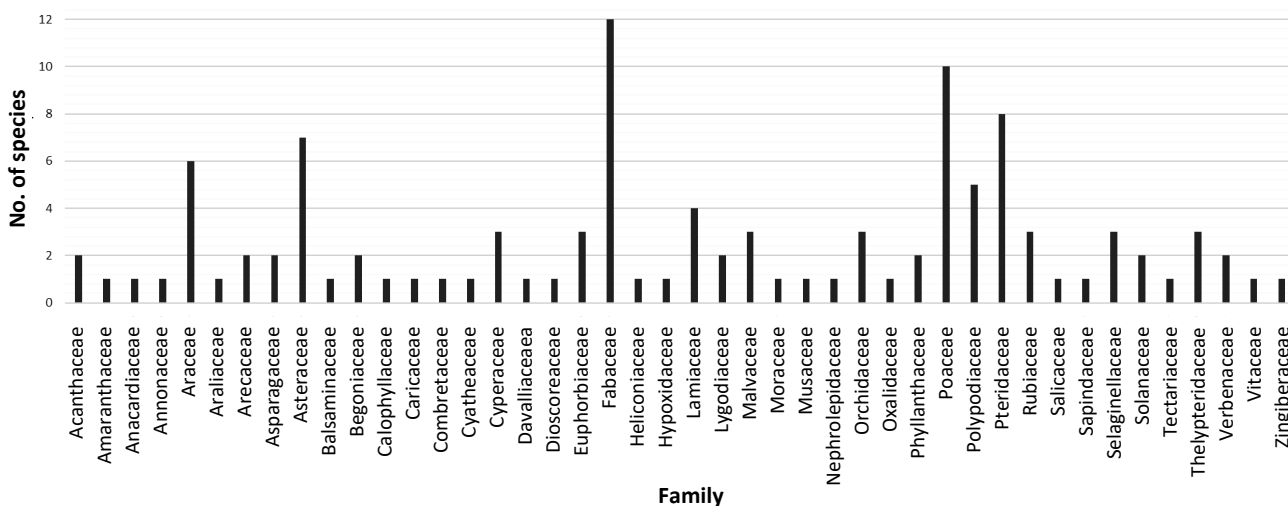


Figure 2. Bar chart of families found in Ayah Village Forest, Kebumen District, Central Java, Indonesia

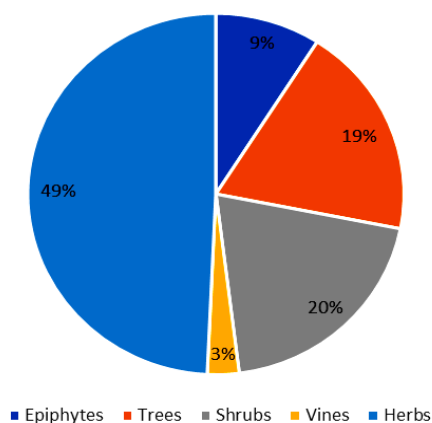


Figure 3. The habitus found in Ayah Village Forest, Kebumen District, Central Java, Indonesia

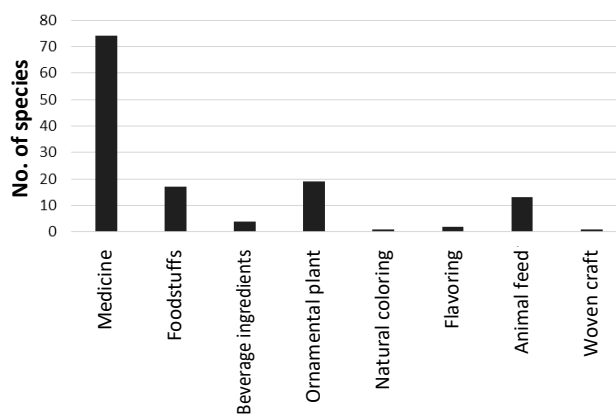


Figure 4. The potential non-timber utilization of vascular plants found in Ayah Village Forest, Kebumen District, Indonesia

**Table 1.** List of non-timber vascular plants recorded in Ayah Village, Ayah Sub-district, Kebumen District, Central Java, Indonesia

Family	Name	Local name	Habitus	Potency
Acanthaceae	<i>Asystasia gangetica</i> (L.) T. Anderson	Ara Sungsang	H	Medicine (45)
	<i>Ruellia tuberosa</i> L.	Pletekan	H	Medicine (1)
Amaranthaceae	<i>Alternanthera sessilis</i> (L.) DC.	Kremah	H	Medicine (74)
Anacardiaceae	<i>Mangifera indica</i> L.	Mangga	T	Foodstuffs, medicine (75), beverage ingredients
Annonaceae	<i>Annona muricata</i> L.	Sirsak	T	Foodstuffs, medicine (76), beverage ingredients
Araceae	<i>Alocasia inornata</i> Hallier f.	-	H	Ornamental plant
	<i>Alocasia longiloba</i> Miq.	-	H	Ornamental plant
	<i>Amorphophallus</i> sp.	-	H	-
	<i>Colocasia esculenta</i> (L.) Schott)	Talas (kecil)	H	Foodstuffs
	<i>Philodendron grandipes</i> K.Krause	-	H	Ornamental plant (54)
	<i>Xanthosoma mexicanum</i> Liebm.	-	H	Ornamental plant
Araliaceae	<i>Polyscias scutellaria</i> (Burm.f.) Fosberg	Mangkokan	S	Medicine (34)
Arecaceae	<i>Arenga pinnata</i> (Wurmb) Merr.	Aren	T	Foodstuffs
	<i>Cocos nucifera</i> L.	Kelapa	T	Foodstuffs, beverage ingredients
Asparagaceae	<i>Cordyline fruticosa</i> (L.) A.Chev.	Andong Merah	S	Medicine (38)
	<i>Dracaena angustifolia</i> (Medik.) Roxb	Suji	S	Medicine, natural coloring (41)
Asteraceae	<i>Ageratum conyzoides</i> L.	Babadotan	H	Medicine (46)
	<i>Chromolaena odorata</i> (L.) R.King & H.Rob.	Kirinyuh	S	Medicine (11)
	<i>Cyanthillium cinereum</i> (L.) H.Rob.	-	H	Medicine (16)
	<i>Eleutheranthera ruderalis</i> (Sw.) Sch.Bip.	Karenyuik	H	-
	<i>Melampodium divaricatum</i> (Rich.) DC.	Bunga Kertas	H	Medicine (39)
	<i>Mikania cordifolia</i> (L.f.) Willd.	-	V	Medicine (44)
	<i>Porophyllum ruderale</i> (Jacq.) Cass.	Ketumbar Bolivia	S	Flavoring (33)
Balsaminaceae	<i>Impatiens platypetala</i> Lindl.	Pacar Tere	H	Ornamental plant
Begoniaceae	<i>Begonia tenuifolia</i> Dryand.	Begonia	H	Ornamental plant
	<i>Begonia urophylla</i> Hook.	Begonia	H	Ornamental plant (37)
Calophyllaceae	<i>Calophyllum calaba</i> L.	-	T	Medicine (64)
Caricaceae	<i>Carica papaya</i> L.	Pepaya	H	Foodstuffs
Combretaceae	<i>Terminalia catappa</i> L.	Ketapang	T	Foodstuffs, medicine (42)
Cyatheaceae	<i>Sphaeropteris</i> sp.	-	T	-
Cyperaceae	<i>Cyperus iria</i> L.	-	H	Animal feed, medicine (48)
	<i>Cyperus kyllingia</i> Endl.	Rumput nnop	H	Animal feed
	<i>Cyperus odoratus</i> L.	Rumput Teki	H	Animal feed, medicine (20)
Davalliaceae	<i>Davallia denticulata</i> (Burm.fil.) Mett. ex Kuhn	Paku Tertutup	E	Ornamental plant (22)
Dioscoreaceae	<i>Tacca palmata</i> Blume	Gadung Tikus	H	Medicine (53)
Euphorbiaceae	<i>Codiaeum variegatum</i> (L.) Rumph. ex A.Juss.	Puring	S	Medicine (12)
	<i>Manihot carthaginensis</i> (Jacq.) Mull.Arg.	Singkong	S	Foodstuffs, animal feed (84)
	<i>Manihot esculenta</i> Crantz	Singkong	S	Foodstuffs (77)
Fabaceae	<i>Acacia auriculiformis</i> A.Cunn. ex Benth.	Akasia	T	Medicine (61)
	<i>Acacia mangium</i> Willd.	-	T	Medicine (9)
	<i>Albizia chinensis</i> (Osbeck) Merr.	Sengon	T	Medicine (78)
	<i>Cassia fistula</i> L.	Tengguli	T	Medicine (43)
	<i>Cassia siamea</i> Lam.	Johar	T	Medicine (8)
	<i>Clitoria ternatea</i> L.	Telang	V	Medicine, ornamental plant (62)
	<i>Desmodium gangeticum</i> (L.)	Samak-Samak	S	Medicine (15)
	<i>Flemingia strobilifera</i> (L.) W. T. Aiton	Hahapaan	S	Medicine (19)
	<i>Leucaena leucocephala</i> (Lam.) de Wit	Lamtoro	T	Foodstuffs, animal feed, medicine (17)
	<i>Mimosa pudica</i> L.	Putri Malu	H	Medicine (2, 10)
	<i>Sesbania grandiflora</i> (L.) Poir.	Turi	T	Medicine, foodstuffs (27)
	<i>Senna tora</i> (L.) Roxb.	Senna Sabit	H	Medicine (52)
	Heliconiaceae	<i>Heliconia psittacorum</i> L.f.	Sepit Udang	H
Hypoxidaceae	<i>Molineria capitulata</i> (Lour.) Herb.	-	H	Medicine (57)
Lamiaceae	<i>Hyptis capitata</i> Jacq.	Rumput Knop	S	Medicine (24)
	<i>Plectranthus scutellarioides</i> L.	Miana	H	Ornamental plant, medicine (40)
	<i>Tectona grandis</i> L.f.	Jati	T	Medicine (60)
	<i>Vitex altissima</i> L.f.	-	T	Medicine (79)
Lygodiaceae	<i>Lygodium circinnatum</i> (Burm.fil.) Sw.	Ketak	E	Foodstuffs, medicine, woven crafts (4)
	<i>Lygodium japonicum</i> (Thunb.) Sw.	-	V	Medicine (6)
Malvaceae	<i>Hibiscus rosa-sinensis</i> L.	Bunga Sepatu	S	Ornamental plant
	<i>Urena lobata</i> L.	Pulutan	S	Medicine (21)
	<i>Sida rhombifolia</i> L.	Sidaguri	S	Medicine (47)

Moraceae	<i>Ficus septica</i> Burm.fil.	Awar-Awar	T	Medicine (10)
Musaceae	<i>Musa paradisiaca</i> L.	Pisang	H	Foodstuffs
Nephrolepidaceae	<i>Nephrolepis brownii</i> (Desv.) Hovenkamp & Miyam	-	H	-
Orchidaceae	<i>Acampe pachy glossa</i> Rchb.f.	Anggrek	E	Ornamental plant
	<i>Dendrobium crumenatum</i> Sw.	Anggrek Merpati	E	Ornamental plant, medicine (59)
	<i>Rhynchosstylis retusa</i> (L.) Blume	Anggrek Ekor Rubah	E	Ornamental plant, medicine (58)
Oxalidaceae	<i>Oxalis barrelieri</i> L.	Belimbing Tanah	H	Medicine (23)
Phyllanthaceae	<i>Breynia vitis-idaea</i> (Burm.f.) C.E.C.Fisch.)	Buah Tinta	S	Medicine (51)
	<i>Phyllanthus urinaria</i> L.	Meniran	H	Medicine (2)
Poaceae	<i>Brachiaria mutica</i> (Forsk.) T.Q.Nguyen	Kolonjono	H	Animal feed
	<i>Cymbopogon citratus</i> (DC.) Stapf	Sereh	H	Flavoring, medicine (35)
	<i>Gigantochloa apus</i> (Schult.f.) Kurz	Bambu Apus	T	Medicine (63)
	<i>Gigantochloa atter</i> (Hassk.) Kurz	Bambu Legi	T	Foodstuffs (80)
	<i>Melinis minutiflora</i> P.Beauv.	Rumput Molasses	H	Animal feed (28)
	<i>Oplismenus compositus</i> (L.) P.Beauv.	-	H	Medicine, animal feed (81)
	<i>Panicum repens</i> L.	Lempuyang	H	Animal feed (18)
	<i>Paspalum conjugatum</i> P.J.Bergius	Papaitan	H	Animal feed, medicine (32)
	<i>Sorghum bicolor</i> L. Moench	Sorgum	H	Foodstuffs, animal feed (31)
	<i>Themeda arguens</i> (L.) Hack.	Rumput Merakan	H	Animal feed
	Polypodiaceae	<i>Drynaria quercifolia</i> L.	Daun Kepala Tupai	E
<i>Drynaria sparsisora</i> (Desc.) Moore		Simbar Layangan	E	-
<i>Microsorium scolopendria</i> (Burm.fil.) Copel.		Pakis	H	Medicine (56)
<i>Phymatosorus scolopendria</i> (Burm.fil.) Pic. Serm.		Pakis Kutil	E	Medicine (82)
<i>Pyrrosia nummularifolia</i> (Sw.) Ching		Paku Duduitan	E	Medicine (83)
Pteridaceae	<i>Adiantum capillus-veneris</i> L.	Suplir	H	Medicine (65)
	<i>Adiantum philippense</i> L.	Kamuding	H	Medicine (68)
	<i>Cheilanthes farinosa</i> (Forssk.) Kaulf.	-	E	Medicine (69)
	<i>Pityrogramma calomelanos</i> (L.) Link	Paku Perak	H	Ornamental plant, medicine (67)
	<i>Pteris biaurita</i> L.	-	H	Medicine (36)
	<i>Pteris ensiformis</i> Burm.	Paku Pedang	H	Ornamental plant
	<i>Pteris multifida</i> Poir.	-	H	Medicine (66)
	<i>Pteris vittata</i> L.	Pakis Rem Cina	H	Medicine (26)
Rubiaceae	<i>Canthium horridum</i> Blume	Tembung Kanjut	S	Ornamental plant (73)
	<i>Coffea canephora</i> Pierre ex A.Froehner	Kopi Robusta	T	Beverage ingredients
	<i>Spermacoce remota</i> Lam	Gigiwangan	H	Medicine (7)
Salicaceae	<i>Flacourtia indica</i> (burm.fil.)Merr.	-	S	Medicine, ornamental plant (50)
Sapindaceae	<i>Schleichera oleosa</i> (Lour.) Oken	Kesambi	T	Animal feed, medicine (25)
Selaginellaceae	<i>Selaginella aristata</i> Spring	-	H	Medicine (49)
	<i>Selaginella ornata</i> (Hook & Grev.) Spring	-	H	Medicine (70)
	<i>Selaginella plana</i> (Desv. ex Poir.) Hieron.	Paku Rane	H	Medicine (70)
Solanaceae	<i>Capsicum frutescens</i> L.	Cabai	S	Foodstuffs
	<i>Solanum melongena</i> L.	Terong	S	Foodstuffs
Tectariaceae	<i>Tectaria angulata</i> (Willd.) Copel.	Paku bukit	H	Medicine (71)
Thelypteridaceae	<i>Christella subpubescens</i> (Blume) Holttum	Jajarat	H	Medicine (65)
	<i>Cyclosorus interruptus</i> (Willd.) H. Ito	-	H	Medicine (72)
	<i>Cyclosorus</i> sp.	-	H	-
Verbenaceae	<i>Stachytarpheta jamaicensis</i> (L.) Vahl	Pecut Kuda	S	Medicine (29)
	<i>Stachytarpheta urticifolia</i> Sims	-	S	Medicine (5)
Vitaceae	<i>Leea indica</i> (Burm.fil.) Merr.	Tanaman Girang	S	Medicine (14)
Zingiberaceae	<i>Amomum compactum</i> Roem. & Schult.	Kapulaga	H	Medicine (13)

Note: E: Epiphytes, T: Trees, S: Shrubs, V: Vines, and H: Herbs; 1. Xu et al. (2020), 2. Kartika (2017), 3. Silalahi (2019), 4. Rahayu et al. (2020), 5. Septiyadi et al. (2021), 6. Lee et al. (2006), 7. Meidalima (2013), 8. Rajegowda and Honnagirigowda (2022), 9. Pereira et al. (2022), 10. Huang et al. (2017), 11. Vaisakh and Pandey (2012), 12. Karyati and Adhi (2017), 13. Praditha et al. (2020), 14. Hossain et al. (2021), 15. Vaghela et al. (2013), 16. Firison et al. (2018), 17. Zayed and Samling (2016), 18. Kumalasari et al. (2020), 19. Shital et al. (2021), 20. Dari et al. (2022), 21. Silalahi (2020), 22. Meliza et al. (2019), 23. Tagne et al. (2015), 24. To'bungan (2020), 25. Goswami and Singh (2017), 26. Paul et al. (2020), 27. Thissera et al. (2020), 28. Djufri (2016), 29. Liew and Yong (2016), 30. Dattaray (2022), 31. Khalid et al. (2022), 32. Garduque et al. (2019), 33. Winara and Subaendah (2020), 34. Rosa et al. (2019), 35. Shah et al. (2011), 36. Dalli et al. (2007), 37. Surya and Astuti (2017), 38. Nurza (2019), 39. Rizki et al. (2019), 40. Hamidah et al. (2019), 41. Andila and Warseno (2019), 42. Santos et al. (2016), 43. Khairunnisa et al. (2019), 44. Mohammad et al. (2013), 45. Mugabo and raji (2013), 46. Harfiani et al. (2017), 47. Syafrullah (2015), 48. Malavika et al. (2021), 49. Silva et al. (1995), 50. Selim et al. (2021), 51. Nagar and Chauhan (2016), 52. Kang et al. (2020), 53. Trimanto and Hapsari (2016), 54. Rundel et al. (2020), 55. Gupta et al. (2021), 56. Balada et al. (2022), 57. Umaru et al. (2020), 58. Rohani et al. (2018), 59. Tarmizi et al. (2020), 60. Nuralifah et al. (2021), 61. Aoetpah et al. (2019), 62. Marpaung (2020), 63. Sujarwo et al. (2010), 64. Laopian et al. (2019), 65. Pagea et al. (2022), 66. Yu et al. (2013), 67. Sutoyo et al. (2018), 68. Paul et al. (2017), 69. Yonathan et al. (2006), 70. Setyawan (2009), 71. Abdullah et al. (2021), 72. Mitra et al. (2019), 73. Hidayat et al. (2010), 74. Walter et al. (2014), 75. Yap et al. (2021), 76. Yajid et al. (2018), 77. Aboitbina et al. (2022), 78. Sharmin and Rashid (2022), 79. Bhavana et al. (2019), 80. Partasasmita et al. (2017), 81. Li and Xing (2016), 82. Mannan et al. (2008), 83. Wulandari et al. (2013), 84. Septiasari et al. (2021)

### Medicinal

The research conducted in the forest area of Ayah Village shows that it has the potential for various medicinal plants. In identifying vascular plants, 74 species from 33 families were found in the forests of Ayah Village, which are useful in medicine. The ingredients contained in medicinal plants can accelerate the healing of disease (Lestari et al. 2021). Many people have used medicinal plants as herbal medicine. Therefore, the knowledge of these herbal medicine plants will be passed on to the next generation.

Many studies have been conducted to determine the content of plants. Usually, only certain parts of the plant can be used in medicine, even if all parts can be used in herbal medicine. According to Susanti et al. 2018, the plant parts mostly used for treatment are roots, stems, bark, flowers, fruit, and juice. Among the plant species found in Ayah Village Forest (Table 1), several plant parts can be used for treatment, starting from stems, leaves, sap, and roots. These plant species, as examples, *Urena lobata* (Figure 5A), *Ruellia tuberosa* (Figure 5B), *Polyscias scutellaria*, *Ageratum conyzoides*, *Chromolaena odorata*, *Melampodium divaricatum*, *Acacia auriculiformis*, *Albizia chinensis*, *Mimosa pudica*, *Plectranthus scutellarioides* and *Ficus septica* (Figure 5C). Medicinal plants have unique properties useful for curing diseases, such as wound medicine, inflammation medicine, fever reducer, and bladder stone.

Generally, the main factors that threaten the preservation of medicinal plants in the forest include habitat destruction, species scarcity, and excessive use of forest resources (Li et al. 2022). Nevertheless, some of these plants are active components in herbal medicine. For example, one of the medicinal plants that local people have used for a long time is *U. lobata*, which can be used as a fever reliever, rheumatism, wound and antiseptic, broken bones, and an anti-fertility agent (Silalahi 2020). In addition, *pulutan* leaf extract has antioxidant, antibacterial, and antifungal properties and can inhibit breast cancer cells (Fadillah et al. 2020).

The next plant that can be used as herbal medicine is *R. tuberosa* (*pletakan*). The presence of flavonoids, steroids, triterpenoids, and alkaloids in *pletakan* plants is well known. *Pletakan* leaves can be helpful to the bladder and coronary heart disease. Experimental studies have demonstrated these plants have ingredients as follows: antibacterial, anticancer, gastroprotective, antinociceptive, and anti-inflammatory properties of *R. tuberosa*. *Pletakan* also functions as a medicine in treating syphilis, bladder stones, bronchitis, cancer, heart disease, colds, fever, hypertension, and digestive problems (Nopiari et al. 2016). Next is *F. septica* or commonly known as *awar-awar*. People usually use *awar-awar* leaves as wound medicine. This plant also functions as a medicine for inflammation, and headaches, reducing fever, treating stomach aches, preventing diarrhea, as a medicine for fungal infections,

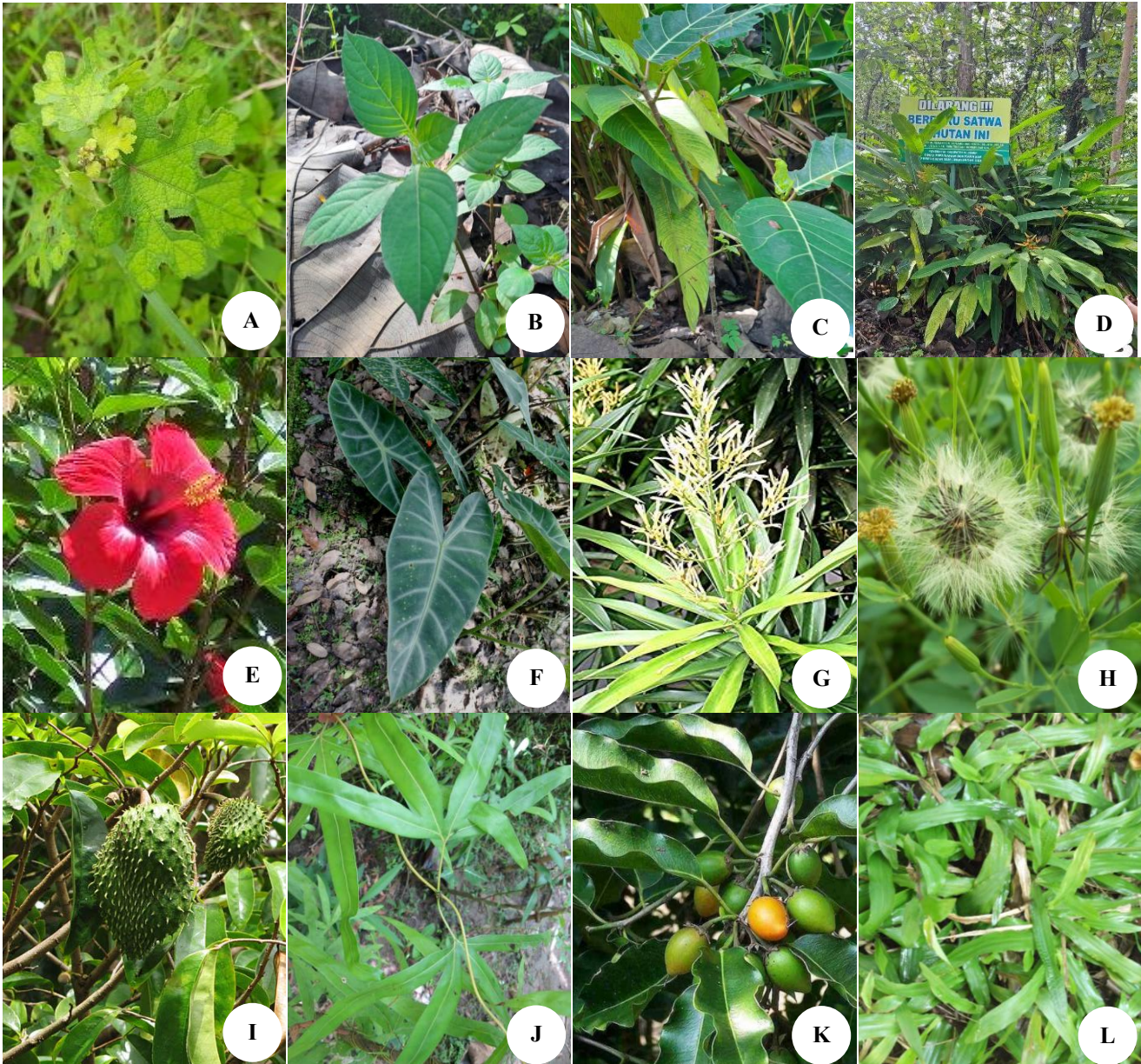
and as a medicine in wound healing, namely steroids, flavonoids, and saponins (Tawi et al. 2019).

### Ornamental plant

Therefore, 19 species of plants from 12 families have the potential as ornamental plants. Plant species that have the potential as ornamental plants are shrubs, epiphytes, and herbs. Ornamental plants have aesthetic value regarding leaves, flowers, and the whole plant (Majanah and Saputri 2019). The plants' types that have the potential to be ornamental plants found in the Ayah karst area include: *Alternanthera sessilis*, *Alocasia longiloba*, *Alocasia inornata*, *Philodendron grandipes*, *Xanthosoma mexicanum*, *Impatiens platypetala*, *Begonia urophylla*, *Begonia tenuifolia*, *Davallia denticulata*, *Heliconia psittacorum*, *Hibiscus rosa-sinensis*, *Acampe pachyglossa*, *Rhynchostylis retusa*, *Clitoria ternatea*, *Canthium horridum*, and *Pteris ensiformis*. The *D. denticulata* has beautiful leaves, so it is an ornamental plant that can be placed indoors and outdoors (Meliza et al. 2019). Apart from its potential as an ornamental plant, *H. psittacorum* has phytoremediation capabilities by reducing mercury metal contamination in the soil (Figure 5D) (Ulimma 2016). In addition to their potential as an ornamental plant, *H. rosa-sinensis* can analyze biomass and absorb carbon (Figure 5E) (Haruna 2020). The *R. retusa* is an orchid plant with exotic flowers and can be used as a commercial product (Nurfadilah 2013). The *A. longiloba* has arrow-shaped leaves with high aesthetic value, so it has the potential as an ornamental plant (Figure 5F) (Marega et al. 2016).

### Foodstuffs

Ayah Forest area has abundant biodiversity. Among the species obtained in this study, several can be used as food by the local community. Regarding location, Ayah Forest is not far from settlements, so that local people can use the plants in the woods as food ingredients. Not only that, but the community can also plant fruit trees in the forest. Seventeen species in the Ayah Forest can be used as food. Among them are *Mangifera indica*, *Annona muricata*, *Colocasia esculenta*, *Arenga pinnata*, *Cocos nucifera*, *Carica papaya*, *Terminalia catappa*, *Manihot carthagenensis*, *Leucaena leucocephala*, *Sesbania grandiflora*, *Musa paradisiaca*, *Gigantochloa atter*, *Gigantochloa apus*, *Sorghum bicolor*, *Drynaria sparsisora*, *Capsicum frutescens*, and *Solanum melongena*. Usually, the species used as food ingredients are plants that produce fruit or vegetables to meet their daily needs. For example, bananas, soursop, tubers, chilies, and eggplants. Moreover, fruit has essential benefits for human health, especially for children growing up (Awuni and Isni 2022). Therefore, growing children would need balanced nutrition and nutrition by eating fruits and vegetables.



**Figure 5.** Some non-timber vascular plants found in Ayah Forest, Kebumen District, Central Java, Indonesia. A. *Urena lobata*, B. *Ruellia tuberosa*, C. *Ficus septica*, D. *Heliconia psittacorum*, E. *Hibiscus rosa-sinensis*, F. *Alternanthera sessilis*, G. *Dracaena angustifolia*, H. *Porophyllum ruderale*, I. *Annona muricata*, J. *Lygodium circinnatum*, K. *Schleicheria oleosa*, L. *Brachiaria mutica*

#### Natural coloring

Based on the number of species obtained in the study, one species of plant found in the forests of Ayah Village could be used as a natural dye. The plant is *Dracaena angustifolia* (*suji*). A member of the *Dracaena* genus, *D. angustifolia*, also known as the *suji* leaf plant, is a widespread species and has long been used in Southeast Asia, including Indonesia. The *D. angustifolia* leaves are often used as a natural food coloring. That is because the chlorophyll pigment, which gives *suji* leaves their natural green color, is present. In the process, the *D. angustifolia* leaves are filtered after kneading with water. Next, *D. angustifolia* leaves are squeezed to release chlorophyll pigment (Andila and Warseno 2019). The juice from *D.*

*angustifolia* leaves was then added to the cooking process to give color to the food. The high chlorophyll concentration in *suji* leaves simplifies chlorophyll extraction (Andistari et al. 2014).

#### Flavoring

There are two species from two families that have the potential to be used for food flavoring. The leaves of *Porophyllum ruderale* have an aromatic fragrance that can be used as a flavoring spice. The *P. ruderale* can be used as a condiment or spice in making traditional sauces known as "salsa" for mixed foods and soups in Mexico and South America (Putro 2021). Besides being known as kitchen lemongrass, *Cymbopogon citratus* is also known for its

distinctive smell, like fresh lemon and orange taste. This aroma is obtained from citral compounds in lemongrass essential oil (Wany et al. 2013). Lemongrass and citronella essential oils have antifungal and antibacterial properties (Han and Tory 2017). Therefore, Lemongrass leaves have a fragrant aroma traditionally used to scent food. Besides being a food flavoring, lemongrass can be used as an herbal drink, essential oil, and aromatherapy. Therefore, to make flavoring from lemongrass is done by drying the leaves first then the dried leaves are made into powder. Once powdered, this flavoring can be used for soups, salads, and curries (Shah et al. 2011).

#### Beverage ingredients

Three types of plants have the potential to be used as a drink, namely *M. indica*, *A. muricata*, and *Coffea canephora*. Mango (*M. indica*) can be made into drinks such as juice and syrup. Drinks made from mangoes are efficacious as antioxidants to increase endurance (Handayani et al. 2020). Coffee (*C. canephora*) is believed to be a drink that can be used to relieve sleepiness, increase alertness, and elevate mood. That is because coffee contains caffeine (Latunra et al. 2021). Several variations of processed drinks can be made from coffee beans, one of which is brown coffee (Faturrahman et al. 2021). Soursop fruit (*A. muricata*) and leaves can be used to make drinks such as juice. Soursop leaves can be used as a tea to treat cancer (Adri and Hersoelistyorini 2013). Soursop leaves can also be used as the base for making ice cream because soursop leaves contain annonaceous acetogenin compounds, which are good for health (Aulia and Purwidiani 2017).

#### Woven craft

Indonesia's nature provides quite a lot of diversity of plants that can be used as raw materials for the handicraft industry, including weaving. Producing woven products from plant materials requires knowledge and experience in recognizing plants with long and robust fibers (Yoese et al. 2019). In the research that was conducted by tracing the forests of Ayah Village, there is one type of plant that has the potential to be used as woven handicrafts, namely *Lygodium circinnatum*, which is a plant that belongs to the Lygodiaceae family. The *L. circinnatum* (rhizome) is used as raw materials for the woven craft industry. Woven handicraft products include baskets, bags, trays, fruit containers, and other souvenirs. Crafts from *L. circinnatum* grass products sell well locally (Susila et al. 2019).

#### Animal feed

Based on the number of species obtained in this study, seven families in the Ayah Forest can be used as animal feed, including *Brachiaria mutica*, *Melinis minutiflora*, *Panicum repens*, *S. bicolor*, *Cyperus kyllingia*, *Themeda arguens*, and *Schleichera oleosa*. Of the seven types of plant species that can be used as animal feed, there is one dominant family, namely the Poaceae family, which consists of the grass family. At first, people thought weeds were useless and even a nuisance, so they sometimes threw them away and burned them, but these grasses can be used

as animal feed, which has many benefits and properties that are good for animals. For example, grass has good nutrition and can launch the metabolic system of animals (Penu 2021).

In conclusion, tropical karst ecosystems support the life of various non-timber vascular plants, with various potential benefits. Based on research that has been conducted, 111 species from 44 families have been found growing in Ayah Forest, Ayah Village, Ayah Sub-district, Kebumen, Central Java, Indonesia. The vascular plants found during the research had different potentials, so in this study, eight prospects were found that could be utilized from vascular plants in Ayah Forest, including: ornamental plants (16 species), medicinal plants (68 species), foodstuffs (13 species), beverage ingredients (3 species), flavoring (2 species), natural dyes (1 species), animal feed (6 species) and woven crafts (1 species).

#### ACKNOWLEDGEMENTS

The author would like to thank Ayah Sub-district, Kebumen District, Central Java, Indonesia, for allowing this research to be carried out. We also thank all colleagues for supporting the writing of this paper and for fruitful comments from anonymous reviewers.

#### REFERENCES

- Abdullah MF, Elizabeth P, Mohd IMN, Azniza AZ, Amirah A, Mohd TA. 2021. Exploring ethnomedicine plants used by the indigenous communities in Terengganu, Malaysia: Human health and the environment. *Malay J Public Health Med* 21 (2): 409-425. DOI: 10.37268/mjphm/vol.21/no.2/art.1084.
- Abotbina W, Sapuan SM, Ilyas RA, Sultan MT, Alkbir MF, Sulaiman S, Harussani MM, Bayraktar E 2022. Recent developments in cassava (*Manihot esculenta*) based biocomposites and their potential industrial applications: A comprehensive review. *Materials* 15 (19): 1-41. DOI: 10.3390/ma15196992.
- Adelita IP, Dharmono. Keanekaragaman genus tumbuhan dari famili Fabaceae di Kawasan Hutan Pantai Tabanio Kabupaten Tanah Laut Kalimantan Selatan. *Prosiding Seminar Nasional Lingkungan Lahan Basah* 03 (1): 209-213. [Indonesian]
- Adri D, Hersoelistyorini W. 2013. Aktivitas antioksidan dan sifat organoleptik teh daun sirsak (*Annona muricata* Linn.) berdasarkan variasi lama pengeringan. *Jurnal Pangan dan Gizi*. 4 (7): 1-12. [Indonesian]
- Andila PS, Warseno T. 2019. Studi potensi daun suji (*Dracaena Angustifolia*) as a medicine: A review. *Widya Biologi* 10 (2): 148-158. DOI: 10.32795/widyabiologi.v10i02.408. [Indonesian]
- Andistari D, Kumalaningsih S, Mulyadi AF. 2014. Potensi daun suji (*Pleomele angustifolia*) sebagai serbuk pewarna alami (kajian konsentrasi dekstrin dan putih telur terhadap karakteristik serbuk). *Seminar Nasional BKS PTN Barat Bandar Lampung*. 19-21 Agustus 2014. [Indonesian]
- Aoetpah S, Alan CS, Sonya TN. 2019. Pengaruh gel ekstrak daun akasia (*Acacia auriculiformis*) terhadap proses penyembuhan luka sayat pada mencit (*Mus musculus*). *Prosiding Seminar Nasional VII Fakultas Kedokteran Hewan Universitas Nusa Cendana*. Kupang, 17 Oktober 2019. [Indonesian]
- Aulia Z, Purwidiani N. 2017. Pengaruh penambahan puree sirsak (*Annona muricata* L.) dan ekstrak daun sirsak terhadap sifat organoleptik es krim. *E-journal Boga* 5 (1): 40-47. [Indonesian]
- Awuni NS, Isni K. 2022. Pengembangan video animasi berbasis kearifan lokal sebagai media promosi kesehatan manfaat buah dan sayur. *Jurnal Formil (Forum Ilmiah) Kesmas Respati* 7 (2): 169-182. DOI: 10.35842/formil.v7i2.436. [Indonesian]

- Balada C, Valentina D, Mónica C, Macarena EB, María JM, Leda G. 2022. Chemistry and bioactivity of *Microsorium scolopendria* (Polypodiaceae): antioxidant effects on an epithelial damage model. *Molecules* 27 (5467): 1-20. DOI: 10.3390/molecules27175467.
- Batubara R, Affandi O. 2017. Nilai ekonomi hasil hutan non kayu dan kontribusinya terhadap pendapatan rumah tangga (Studi kasus pada dua desa sekitar Taman Wisata Sibolangit). *Wahana Forestra: Jurnal Kehutanan* 12 (2): 149-162. DOI: 10.31849/forestra.v12i2.222. [Indonesian]
- Bhavana S, Gubbiveeranna V, Kusuma CG, Ravikumar H, Sumachirayu CK, Nagabhushana H, Nagaraju S. 2019. Facile green synthesis of SnO<sub>2</sub> NPs using *Vitex altissima* (L.) leaves extracts: Characterization and evaluation of antibacterial and anticancer properties. *J Clust Sci* 30 (2): 431-437. DOI: 10.1007/s10876-019-01496-w.
- Central Bureau of Statistics for Kebumen District (Badan Pusat Statistik Kabupaten Kebumen-BPS). 2020. Kecamatan Ayah dalam angka 2020. BPS Kabupaten Kebumen, <https://kebumenkab.bps.go.id/publication/2020/10/05/8c54afe77d8f75f5653a6c66/kecamatan-ayah-dalam-angka-2020.html>. [Indonesian]
- Dalli AK, G Saha, U Chakraborty. 2007. Characterization of antimicrobial compounds from a common fern, *Pteris biaurita*. *Indian J Exp Biol* 45 (3): 285-290.
- Dari CAY, Hardiansyah, Noorhidayati. 2022. Keanekaragaman Cyperaceae di kawasan persawahan Desa Beringin Kencana Kecamatan Tabunganan Kalimantan Selatan. *Oryza Jurnal Pendidikan Biologi* 11 (1): 13-20. DOI: 10.33627/oz.v11i1.705. [Indonesian]
- Dattaray D. 2022. Traditional uses and pharmacology of plant *Tridax procumbens*: A review. *Sys Rev Pharm* 13 (5): 511-517. DOI: 10.31858/0975-8453.13.5.511-517.
- Dimmit MA. 2014. Fabaceae. Arizona-Sonora Desert Museum, Arizona.
- Djufri. 2016. Potensi padang rumput (grasland) sebagai peluang usaha prospektif belum dimanfaatkan secara optimal. *Prosiding Seminar Nasional Biotik. Universitas Syiah Kuala, Banda Aceh*. [Indonesian]
- Fadillah, UF, Hambali E, Muslich. 2020. Identifikasi senyawa ekstrak daun pulutan (*Urena lobata* L) dengan GC-MS. *Jurnal Sains dan Kesehatan* 2 (3): 217-221. [Indonesian]
- Faida LRW, Sunarto, Sutikno, Fandeli C. 2018. Gunung Sewu: Menguak Jejak Sejarah Flora, Merekonstruksi Kawasan Karst. UGM Press, Yogyakarta. [Indonesian].
- Faozi A, Santoso AB. 2020. Strategi pengembangan Objek Wisata Goa Petruk Kecamatan Ayah Kabupaten Kebumen. *Geo Image* 9 (1): 72-81. [Indonesian]
- Faturrahman, Arif RHY, Baiq LO. 2021. Inovasi biji kopi robusta menjadi kopi coklat sebagai sumber penghasilan masyarakat Dusun Monggal Bawah, Desa Genggelang. *Jurnal Pepadu* 2 (1): 68-74. DOI: 10.29303/jurnalpepadu.v2i1.294. [Indonesian]
- Firison J, Andi I, Taufik H. 2018. Pemanfaatan tumbuhan bawah pada tegakan kelapa sawit oleh masyarakat lokal (Kasus di Desa Kungkai Baru, Kecamatan Air Perikuhan, Kabupaten Seluma - Bengkulu). *Agritepa* 5 (1): 19-31. DOI: 10.37676/agritepa.v5i2.776. [Indonesian]
- Garduque DA, Kyrie RM, Shalom MO. 2019. Antimicrobial efficacy of carabao grass (*Paspalum conjugatum*) leaves on *Staphylococcus aureus*. *Intl Schol Conf* 7 (1): 384-397. DOI: 10.35974/isc.v7i1.1035.
- Goswami S, Singh RP. 2017. Ayurvedic, phytochemical, and pharmacological review of *Schleichera oleosa* (Lour.) Oken: A traditional plant with enormous biological activity. *World J Pharm Res* 6 (10): 295-309. DOI: 10.20959/wjpr201710-9370.
- Gupta SK, Nnan BB, Prashan KC. 2021. Ethno-medicinal properties of *Drynaria quercifolia* (L.) J. Smith. *Intl J Creat Res Thoughts* 9 (4): 5464-5473.
- Hadi EEW, Widyastuti SM, Wahyuono S. 2016. Keanekaragaman dan pemanfaatan tumbuhan bawah pada sistem agroforestry di Perbukitan Menoreh, Kabupaten Kulon Progo. *J Manusia Dan Lingkungan*. 23 (2): 206-215. DOI: 10.22146/jml.18792. [Indonesian]
- Hamidah M, Moelyono M, Marline A. 2019. Review artikel: Senyawa aktif antiinflamasi daun jawer kotok (*Plectranthus scutellarioides* (L.) R.Br). *Farmaka* 89 (17): 89-96. [Indonesian]
- Han X, Tory LP. 2017. Lemongrass (*Cymbopogon flexuosus*) essential oil demonstrated anti-inflammatory effect in preinfamed human dermal fibroblasts. *Biochim Open* 4: 107-111. DOI: 10.1016/j.biopen.2017.03.004.
- Handayani R, Dila AD, Mia WS, Monica SS, Neng R. 2020. Pembuatan smoothies mangga sebagai imun booster bagi warga Kota Kulon Kabupaten Garut. *Jurnal Pengabdian Kepada Masyarakat* 3 (4): 59-63. [Indonesian]
- Harfiani E, Riri NC, Katrin B, Ade A, Anton B. 2017. Functional analysis of *Ageratum conyzoides* L. (babandotan) leaves extract on rheumatoid arthritis model rat. *Asian J Pharm Clin Res* 10 (3): 429-433. DOI: 10.22159/ajpcr.2017.v10i3.16428.
- Haruna MF. 2020. Analisis biomassa dan potensi penyerapan karbon oleh tanaman pohon di Taman Kota Luwuk. *J Pendidikan Glasser* 4 (2): 152-161. DOI: 10.32529/glasser.v4i2.742. [Indonesian]
- Haryono E, Sutanto P, Suratman, Sutikno. 2017. Polygonal Karst morphology of Karangbolong area, Java Indonesia. *Acta Carsologica* 46 (1): 63-72. DOI: 10.3986/ac.v46i1.3589. [Indonesian]
- Hidayat S, Agus H, Ervial AMZ. 2010. Ethnobotanical study of local people at Dukuh Cultural Village Garut Regency, West Java. *Media Konservasi* 15 (3): 139-151. [Indonesian]
- Hirman, Sugiyarto, Maizer SN. 2021. Diversitas Gramineae di kawasan Gunung Api Purba (GAP) Nglanggeran Yogyakarta. 2021: *Prosiding SNPBS (Seminar Nasional Pendidikan Biologi dan Saintek)* 6: 277-291. [Indonesian]
- Hossain F, Mostofa G, Alam AHMK. 2021. Traditional uses and pharmacological activities of the genus *Leea* and its phytochemicals: A review. *Heliyon* 7 (2): 1-12. DOI: 10.1016/j.heliyon.2021.e0622.
- Huang NC, Hung WT, Tsai WL, Lai FY, Lin YS, Huang MS, Chen JJ, Lin WY, Weng JR, Chang TH. 2017. *Ficus septica* plant extracts for treating Dengue Virus in vitro. *PeerJ* 5: 1-12. DOI: 10.7717/peerj.3448.
- Kang S, Ramesh PP, Chang-Muk L, Joon-Soo S, Jin-Tae J, Beom-Soon C, Myunghye J, Daniel G, Kangmei Z, So Youn W, Tae-Jin O, Yeisoo Y, Nam-Hoon K, Ok Ran L, Tae-Ho L, Puspallata B, Tae-Su K, Woo-Haeng L, Charles H, Chang-Kug K, Jung Sun K, Byoung OA, Seung YR, Jae KS. 2020. Genome-enabled discovery of anthraquinone biosynthesis in *Senna tora*. *Nat Commun* 11 (5875): 1-11. DOI: 10.1038/s41467-020-19681-1.
- Kartika T. 2017. Potensi tumbuhan liar berkhasiat obat di sekitar pekarangan Kelurahan Silaberanti Kecamatan Silaberanti. *Sainmatika* 14 (2): 89-99. [Indonesian]
- Karyati K, Adhi MA. 2017. Jenis-jenis Tumbuhan Bawah di Hutan Pendidikan Fakultas Kehutanan Universitas Mulawarman. Universitas Mulawarman Press, Samarinda, East Kalimantan. [Indonesian]
- Khairunnisa A, rini H, Anis YC. 2019. Review artikel: Kandungan dan aktivitas farmakologi tanaman trengguli (*Cassia fistula* L.). 17 (3): 71-77. [Indonesian]
- Khalid W, Anwar A, Muhammad SA, Fareed A, Ramish A, Azhari S, Safura K, Muhammad AR, Afifa A, Zahra M, Ayesha S. 2022. Nutrients and bioactive compounds of *Sorghum bicolor* L. used to prepare functional foods: A review on the efficacy against different chronic disorders. *Intl J Food Prop* 25 (1): 1045-1062. DOI: 10.1080/10942912.2022.2071293.
- Kumalasari NR, Sunardi, L Khotijah, L Abdullah. 2020. Evaluasi potensi produksi dan kualitas tumbuhan penutup tanah sebagai hijauan pakan di bawah naungan perkebunan di Jawa Barat. *Jurnal Ilmu Nutrisi dan Teknologi Pakan* 18 (1): 7-10. DOI: 10.29244/jintp.18.1.7-10. [Indonesian]
- Laopian F, Kaennakam S, Rassamee K, Siripong P, Tip-Pyang S. 2019. Calaxanthones AC, three new xanthones from the roots of *Calophyllum calaba* and the cytotoxicity. *Nat Prod Res* 33 (11): 1584-1590. DOI: 10.1080/14786419.2018.1425849.
- Latunra AI, Eva J, Besse M, Ophirtus S. 2021. Analisis kandungan kafein kopi (*Coffea arabica*) pada tingkat kematangan berbeda menggunakan spektrofotometer UV-VIS. *Jurnal Ilmu Alam dan Lingkungan* 12 (1): 45-50. [Indonesian]
- Lee BC, Sang-Woo K, Young-Min A, Ho-Kyung D, Se-Young A. 2006. The effects of *Lygodium japonicum* treatment on hematological and cyto-pathological alterations in non-bacterial prostatitis rat model. *J Intern Kor Med* 27 (3): 664-676.
- Lestari D, Koneri R, Maabuat PV. 2021. Keanekaragaman dan pemanfaatan tanaman obat pada pekarangan di Dumugo Utara, Kabupaten Bolaang Mongondow, Sulawesi Utara. *Jurnal Bios Logos* 11 (2): 82-93. DOI: 10.35799/jbl.11.2.2021.32017. [Indonesian]
- Li C, Lou H, Yang S, Pan Z, Zhang Y, Zhang J, Li X. 2022. The response of plant diversity to human dominance in the meta-watershed ecosystem of Southwest China. *Ecol Indic* 143: 1-11. DOI: 10.1016/j.ecolind.2022.109389.
- Li C, Xiong K, Wu G. 2013. Process of biodiversity research of karst areas in China. *Acta Ecologica Sinica* 33 (4): 192-200. DOI: 10.1016/j.chnaes.2013.05.005.

- Li DL, Xing FW. 2016. Ethnobotanical study on medicinal plants used by local haklos people on Hainan Island, China. *J Ethnopharmacol* 194: 358-368. DOI: 10.1016/j.jep.2016.07.050.
- Liew PM, Yong KY. 2016. *Stachytarpheta jamaicensis* (L.) Vahl: From traditional usage to pharmacological evidence. *Evid-Based Complement Altern Med* 2016: 1-7. DOI: 10.1155/2016/7842340.
- Lumpert M, Kreft S. 2017. Folk use of medicinal plants in Karst and Gorjanci, Slovenia. *J Ethnobiol Ethnomed* 13 (16): 1-34. DOI: 10.1186/s13002-017-0144-0.
- Majanah, Saputri I. 2019. Pemanfaatan tanaman hias sebagai obat tradisional. *Jurnal Jeumpa* 6 (1): 210-214. [Indonesian]
- Malavika TM, Sarathlal PS, Dr. Ajith BTK, Poornima M. 2021. *Cyperus Iria*: An overview. *Intl J Res Sci Innov* 8 (6): 53-55.
- Mannan MM, Maridass M, Victor B. 2008. A review on the potential uses of ferns. *Ethnobot Leaflet* 2008 (1): 33. DOI: 10.51244/IJRSI.2021.8601.
- Mansur, Tjoneng A, Salda. 2018. Model pemanfaatan Hasil Hutan Bukan Kayu (HHBK) bagi masyarakat zona tradisional Taman Nasional Bantimurung Bulusarung. *Jurnal Agrotek* 2 (1): 28-34. DOI: 10.33096/agrotek.v2i1.42. [Indonesian]
- Marega, Indrayani Y, Ardian H. 2016. Keanekaragaman jenis tumbuhan berpotensi menjadi tanaman hias pada kawasan hutan lindung Gunung Bawang Kabupaten Bengkayang. *Jurnal Hutan Lestari* 4 (4): 534-542. [Indonesian]
- Marpang AM. 2020. Tinjauan manfaat bunga telang (*Clitoria Ternatea* L.) bagi Kesehatan manusia. *J Funct Food Nutraceutical* 1 (2): 1-23. DOI: 10.33555/jffn.v1i2.30. [Indonesian]
- Marwiyati. 2012. Ekologi Vegetasi dan Etnobotani Kawasan Karst Gunung Cibodas, Ciampoa, Bogor. [Skripsi]. Institut Pertanian Bogor, Bogor. [Indonesian]
- Meidalima D. 2013. Pengaruh tumbuhan liar berbunga terhadap tanaman tebu dan keberadaan parasitoid di Pertanaman Tebu Lahan Kering, Cinta Manis Sumatera Selatan. *Jurnal Lahan Suboptimal* 2 (1): 35-42. [Indonesian]
- Meliza R, Tatik C, Sulistijorini. 2019. Morfologi spora dan perkembangan gametofit *Davallia denticulata* dan *Davallia trichomanoides*. *Jurnal Bioteknologi dan Biosains Indonesia* 6 (1): 1-10. DOI: 10.29122/jbbi.v6i1.2607. [Indonesian]
- Mitra A, Manabendra DC, Prakash RC, Deepa N, Subrata D, Anupam DT. 2019. Antioxidative and free radical scavenging potentials of *Cyclosorus interruptus* (Willd.) H. Itô and *Pronophrum nudatum* (Roxb. ex Griff.) Holttum. *Asian J Pharm Clin Res* 12 (9): 87-94. DOI: 10.22159/ajpcr.2019.v12i9.32039.
- Mohammad N, Majumder MS, Rashed-al-Qayum KM, Bhattacharjee SH, Kar AU. 2013. Phytochemical screening of medicinal plant-*Mikania cordifolia* and determination of its characteristics. *Mintag J Pharm Med Sci* 2 (1): 14-17.
- Mugabo P, Raji IA. 2013. Effects of aqueous leaf extract of *Asystasia gangetica* on the blood pressure and heart rate in male spontaneously hypertensive Wistar rats. *Complement Altern Med* 13 (283): 1-7. DOI: 10.1186/1472-6882-13-283.
- Nagar JC, Chauhan LS. 2016. Antioxidant activity of *Erythrina variegata* and *Breynia vitis-idaea* in alloxan induced diabetic rats. *Intl J Adv Res* 4 (1): 840-845.
- Nasrudin A, Parikesit. 2020. Analisis vegetasi di karst kawasan kampus Universitas Padjajaran Cintaratu, Pangandaran, Jawa Barat. *Pros Sem Nas Masy Biodiv Indon* 6 (1): 493-500. [Indonesian]
- Nopiari IA, Astiti NPA, Wiratmini NI. 2016. Identifikasi senyawa aktif daun pletakan (*Ruellia tuberosa* L.) dengan menggunakan GC-MS. *Jurnal Simbiosis* 5 (2): 55-57. [Indonesian]
- Nugroho NE, Paripurno ET. 2019. Karakter dan potensi risiko kerusakan ekosistem karst cekungan air tanah Watuputih Kabupaten Rembang, Provinsi Jawa Tengah. *Jurnal Ilmiah Lingkungan Kebumihan* 2 (1): 34-45. DOI: 10.31315/jilk.v2i1.3288. [Indonesian]
- Nuralifah, Parawansah, Nurul FR. 2021. Aktivitas antihiperlipidemik ekstrak etanol daun jati (*Tectona grandis* L.) pada tikus yang diinduksi sterptozotisin. *Jurnal Farmasi Sains dan Praktis* 7 (3): 412-419. [Indonesian]
- Nurfadilah S. 2013. Pertumbuhan dan perkembangan bibit *Rhyncostylis retusa* L. (Bl.) (Orchidaceae) pada konsentrasi Fosfor (P) berbeda. *Bot Gardens Bull* 16 (1): 51-57. [Indonesian]
- Nurza ISA. 2019. Identifikasi tanaman hias (*Cordyline fruticosa*) di Kebun Raya Bogor sebagai tanaman lanskap berdasarkan morfologi dan anatominya. *Risenologi* 4 (1): 24-33. DOI: 10.47028/j.risenologi.2019.41.49. [Indonesian]
- Pagea AC, Fathul Y, Yeni M. 2022. Keragaman jenis tanaman obat tradisional yang dimanfaatkan oleh Battra di Desa Sepang Kabupaten Mempawah. *Serambi Eng* 7 (94): 3827-3836. DOI: 10.32672/jse.v7i4.4817. [Indonesian]
- Partasasmita R, An'amillah A, Iskandar J, Mutaqin AZ, Annisa. 2017. Traditional knowledge of bamboo and its role in Karangwangi Village Cianjur, West Java: Implications for management of cultural keystone species. *Biodiversitas* 18: 275-282. DOI: 10.13057/biodiv/d180135.
- Paul T, Kishori GA, Pradeep BP, Biswadeep D. 2017. Role of *Adiantum philippense* L. on glucose uptake in isolated pancreatic cells and inhibition of adipocyte differentiation in 3T3-L1 cell line. *Pharmacogn Magazine* 13 (50): 334-338. DOI: 10.4103/pm.pm\_415\_16.
- Paul TS, Biswadeep BD, Yogesh PT, Suchitra B. 2020. Exploration of the role of a lithophytic fern, *Pteris vittata* L. in wound tissue regeneration and remodelling of genes in hyperglycaemic rat model. *Clin Phytosci* 6 (79): 1-12. DOI: 10.1186/s40816-020-00223-7.
- Penu MA. 2021. Pemberian Pakan Rumput Gajah (*Pennisetum Purpureum*) kepada Ternak Sapi Bali di Desa Manulasi Kecamatan Miomaffo Barat Kabupaten Timur Tengah Utara. [Laporan Praktik Kerja Lapangan]. Kementerian Pertanian Badan Penyuluhan dan Pengembangan SDM Pertanian Sekolah Menengah Kejuruan Pertanian Pembangunan Negeri Kupang, Kupang. [Indonesian]
- Pereira PRC, Dutra JCV, Costalunga S, Santos VS, Santos LE, Trindade MGP, Batitucci MCP. 2022. *Acacia mangium* Willd extract antioxidant and antiproliferative activities. *J Pharm Pharmacol* 10: 263-272. DOI: 10.17265/2328-2150/2022.10.004.
- Praditha AN, Tyagita H, Nur A. 2020. Kajian pustaka: Pemanfaatan biji kapulaga jawa (*Amomum compactum*) sebagai antiinflamasi dan antibiotic growth promoter alternatif untuk ternak. *Indonesia Medicus Veterinus* 9 (6): 959-969. DOI: 10.19087/imv.2020.9.6.959. [Indonesian]
- Putro HR. 2021. Biodiversity of Darmaga. Institut pertanian Bogor, Bogor. [Indonesian]
- Rahayu M, Emma SK, Mahdawia, Marwan S. 2020. Short communication: Ethnobotanical study of *Lygodium circinatum* and its utilizations in crafts weaving in Indonesia. *Biodiversitas* 21 (2): 617-621. DOI: 10.13057/biodiv/d210225.
- Rajegowda SH, Honnagirigowda SRA. 2022. In-vitro anti-inflammatory activity of serine protease inhibitor from *Cassia siamea* and *Dolichos biflorus*: A comparative study. *Cell Biochem Funct* 41 (1): 33-44. DOI: 10.1002/cbf.3758.
- Rizki R, Oki F, Nursyahra N. 2019. Etnofarmakologi Tumbuhan Familia Asteraceae di Kabupaten Pasaman Barat. INA-Rxiv Paper. September 2019. DOI: 10.31227/osf.io/x7ah8. [Indonesian]
- Rohani S, Tarana A, Md. Salahuddin S, Moutushi KT, Khoshnur J, Mohammed R. 2018. *Rhynchostylis retusa* (L.) Blume: A potential plant to cure paralysis. *J Med Plants Stud* 6 (4): 20-21.
- Rosa D, Yuniwaty H, Natania K, Marcella S, Ariela S. 2019. Antibacterial activity of *Polyscias Scutellaria* Fosberg against *Acinetobacter* sp. *Asian J Pharm Clin Res* 12 (1): 516-519. DOI: 10.22159/ajpcr.2018.v12i1.30270.
- Rundel PW, Cooley AM, Gerst KL, Riordan EC, Sharifi MS, Sun JW, Tower JA. 2020. Functional traits of broad-leaved monocot herbs in the understory and forest edges of a Costa Rican rainforest. *PeerJ* 8: e9958. DOI: 10.7717/peerj.9958.
- Sagar A, Tajkia JE, Sarwar AKMG. 2018. Weed diversity of the family Poaceae in Bangladesh Agricultural University campus and their ethnobotanical uses. *J Bangladesh Agril Univ* 16 (3): 372-379. DOI: 10.3329/jbau.v16i3.39398.
- Santos OV, Natasha DL, Suzana CSL. 2016. Chemical, orphological, and thermogravimetric of *Terminalia catappa* Linn. *Food Sci Technol Campinas* 36 (1): 151-158. DOI: 10.1590/1678-457X.0090.
- Selim S, Noushin A, Shariful IN, Faizul IC, Nadia S, Ferdous K, Khondoker SA, Iqbal AM, Mohammad MH, Ashraf AM. 2021. *Flacourtia indica* fruit extract modulated antioxidant gene expression, prevented oxidative stress and ameliorated kidney dysfunction in isoprenaline administered rats. *Biochem Biophys* 26: 1-10. DOI: 10.1016/j.bbrep.2021.101012.
- Septiasari A, Balgis M, Lathifah MN, Hanugroho PD, Setyawan AD. 2021. Identification and potential of vascular plants in the karst ecosystem of Somopuro Cave, Pacitan, East Java, Indonesia. *Intl J Trop Drylands* 5: 75-83. DOI: 10.13057/tropdrylands/t050204.
- Septiyadi, Raden AMRS, Asman S. 2021. Penggunaan daun pecut kuda sebagai obat tradisional di Desa Sukarame Kecamatan Leles, Garut,

- Jawa Barat. Prosiding Seminar Nasional Diseminasi Penelitian. Tasikmalaya, 30 September 2021. [Indonesian]
- Setyawan AD. 2009. Traditionally utilization of *Selaginella*; field research and literature review. Nusanantara Biosci 1 (3): 146-158. DOI: 10.13057/nusbiosci/n010307.
- Shah G, Richa S, Vivek P, Narender S, Bharpur S, Mann AS. 2011. Scientific basis for the therapeutic use of *Cymbopogon citratus*, Stapf (Lemon grass). J Adv Pharm Technol Res 2 (1): 3-8. DOI: 10.4103/2231-4040.79796.
- Sharmin T, Rashid MA. 2020. Bioactivities of stem bark of *Albizia chinensis* Osbeck. Merr., Chakua Koroï of Bangladesh. Afr J Pharm Pharmacol 14 (6): 179-184. DOI: 10.5897/AJPP2020.5134.
- Shital D, Khale A, Rawal J. 2021. A comprehensive review of *Flemingia strobilifera* (LAM). Acta Sci Pharm Sci 5 (6): 105-110. DOI: 10.31080/ASPS.2021.05.0736.
- Silalahi M. 2019. Keanekaragaman tumbuhan bermanfaat di pekarangan oleh Etnis Sunda di Desa Sindang Jaya Kabupaten Cianjur Jawa Barat. Jurnal Pendidikan Matematika dan IPA 10 (1): 88-104. DOI: 10.26418/jpmipa.v10i1.25849. [Indonesian]
- Silalahi M. 2020. *Urena lobata* (Pemanfaatan sebagai Obat Tradisional dan Bioaktivitasnya). Jurnal Kesehatan Masyarakat 6 (2): 114-120. DOI: 10.35329/jkesmas.v6i2.1875. [Indonesian]
- Silva GL, Heebyung C, Mahabir PG, Norman RF, Geoffrey AC, John MP, Christopher WWB, Douglas KA. 1995. Cytotoxic biflavonoids from *Selaginella wildenowii*. J Phytochem 4: 129-134. DOI: 10.1016/0031-9422(95)00212-P.
- Sugita YDBW, Zahida F, Pramana Y. 2015. Pemetaan Flora dan Pola Pemanfaatan Lahan Pertanian di Sekitar Daerah Gua Ngguwu Gunungkidul sebagai Daerah Ekowisata. [Thesis]. Universitas Atma Jaya Yogyakarta, Yogyakarta. [Indonesian]
- Suhendar AS, Edy Y, Pudji W. 2018. Analisis vegetasi Kawasan Karst Gombang Selatan Kebumeh Jawa Tengah. Scripta Biologica 5 (1): 37-40. DOI: 10.20884/1.sb.2018.5.1.639. [Indonesian]
- Sujarwo W, Arinasa IB, Peneng IN. 2010. Potensi Bambu Tali (*Gigantochloa apus* JA & JH Schult. Kurz) sebagai Obat di Bali. Pusat Penelitian dan Pengembangan Perkebunan, Kementerian Pertanian. [Indonesian]
- Sulastoro. 2013. Karakteristik sumber daya air di daerah karst (Studi kasus daerah Pracimantoro). J Rural Dev 4 (1): 61-67. [Indonesian]
- Surya MI, Astuti IP. 2017. Keanekaragaman dan potensi tumbuhan di kawasan Hutan Lindung Gunung Pesagi, Lampung Barat. Pros Sem Nas Masy Biodiv Indon 3 (2): 211-215. DOI: 10.13057/psnmbi/m030208. [Indonesian]
- Susanti AD, Wijayanto N, Hikmat A. 2018. Keanekaragaman Jenis tumbuhan obat di Agroforestri Repong Damar Krui, Provinsi Lampung. Media Konservasi 23 (2): 162-168. [Indonesian]
- Susila IWW, Setiawan O, Hidayatullah M. 2019. Potensi dan habitat tempat tumbuh ketak (*Lygodium circinnatum* (Burn. F) Swartz) di Lombok. Jurnal Penelitian Hutan Tanaman 16 (2): 103-114. DOI: 10.20886/jpht.2019.16.2.103-114. [Indonesian]
- Sutoyo S, Ismono, Mitarlis, Andika PW. 2018. Aktivitas antioksidan senyawa fenolik dari tumbuhan paku perak (*Pityrogramma calomelanos*). Prosiding Seminar Nasional Kimia dan Pembelajarannya. Malang, 3 November 2018. [Indonesian]
- Syafrullah SC. 2015. Indonesian sidaguri (*Sida rhombifolia* L.) as antigout and inhibition kinetics of flavanoids. J Major 4 (1): 81-85. [Indonesian]
- Tagne MF, Kamgang R, Noubissi PA, Oyono JL. 2015. Activity of *Oxalis barrelieri* aqueous extract on rat secretory diarrhea and intestine transit. J Appl Pharm Sci 5 (1): 58-62.
- Tarmizi N, Hui SY, Nabilah I, Wan NWN, Nur KN, Siti AMD. 2020. Utilization of *Dendrobium crumenatum* as anti-corrosion additive for mild steel in different seawater velocities. J Sustain Sci Manag 15 (5): 19-28. DOI: 10.46754/jssm.2020.07.004.
- Tawi GY, Maarisit W, Datu OS, Lengkey YK. 2019. Uji efektivitas ekstrak etanol daun awar-awar *Ficus septica* Burn F. sebagai antipiretik terhadap tikus putih *Rattus novgicus*. Jurnal Biofarmasetikal Tropis 2 (1): 1-9. DOI: /10.55724/jbiofarmtrop.v2i1.32. [Indonesian]
- Thissera B, Visvanathan R, Khanfar MA, Qader MM, Hassan MHA, Hassan HM, Bawazeer M, Behery FA, Yaseen M, Liyanage R, Abdelmohsen UR, Rateb ME. 2020. *Sesbania grandiflora* L. Poir leaves: A dietary supplement to alleviate type 2 diabetes through metabolic enzymes inhibition. South Afr J Bot 130: 282-299. DOI: 10.1016/j.sajb.2020.01.011.
- To'bungan N. 2020. Pemanfaatan dan skrining fitokimia infusa daun rumput knop (*Hyptis capitata* Jacq.). Biota: Jurnal Ilmiah Ilmu-Ilmu Hayati 5 (3): 149-154. DOI: 10.24002/biota.v5i3.3520. [Indonesian]
- Trimanto, Hapsari L. 2016. Botanical survey in thirteen montane forests of Bawean island nature reserve, East Java Indonesia: Flora diversity, conservation status, and bioprospecting. Biodiversitas 17 (2): 832-846. DOI: 10.13057/biodiv/d170261.
- Ulimma R. 2016. Potensi tanaman hias dalam meremediasi tanah tercemar logam Merkuri (Hg) (Studi Kasus: Tailing Mandor). Jurnal Teknologi Lingkungan 4 (1): 1-7. DOI: 10.26418/jtlb.v4i1.13573. [Indonesian]
- Umaru IJ, Hauwa AU, Christopher EA, Maryam AU. 2020. Phytochemical, characterization and antimicrobial studies of *Molineria capitulata* fruits essential oil against multidrug resistance pathogens. Solid State Technol 63 (1): 90-107.
- Vaghela B, buddhadev S, Shukla L. 2013. Pharmacological activities of *Desmodium gangeticum*: An overview. Pharm Sci Monitor 4 (4): 264-278.
- Vaisakh MN, Pandey A. 2012. The invasive weed with healing properties: A review on *Chromolaena odorata*. IJPSR 3 (1): 80-83.
- Walter TM, Merish S, Tamizhamuthu M. 2014. Review of *Alternanthera sessilis* with reference to traditional Siddha medicine. Intl J Pharmacogn Phytochem Res 6 (2): 249-254.
- Wany A, Shivesh J, Vinod KN, Dev MP. 2013. Chemical analysis and therapeutic uses of citronella oil from *Cymbopogon winterianus*: A short review. Intl J Adv Res 1 (6): 504-521.
- Widyaningsih GA. 2017. Permasalahan hukum dalam perlindungan ekosistem karst di Indonesia (Studi Kasus: Ekosistem Karst Sangkulirang-Mangkalihat, Provinsi Kalimantan Timur). J Hukum Lingkungan Indonesia 3 (2): 73-95. DOI: 10.38011/jlh.v3i2.44. [Indonesian]
- Widyastuti M, Riyanto IA, Naufa M, Ramadhan M, Rahmawati N. 2019. Catchment area analysis of Guntur Karst spring Gunung Kidul Regency, Java, Indonesia. IOP Conf Ser: Earth Environ Sci 256: 1-11. DOI: 10.1088/1755-1315/256/1/012008.
- Winara A, Suhaendah. 2020. The diversity and utilization of weeds in sengon (*Falcataria moluccana* (Miq.) Barneby & J.W.) Grimes) agroforestry and monoculture pattern. Jurnal Agroforestri Indonesia 3 (1): 29-43. DOI: 10.20886/jai.2020.3.1.29-43.
- Wulandari ET, Elya B, Hanani E, Pawitan JA. 2013. In vitro antioxidant and cytotoxicity activity of extract and fraction *Pyrrosia piloselloides* (L.) MG Price. Intl J Pharm Tech Res 5 (1): 974-4304.
- Xu JH, Lo YM, Chang WC, Huang DW, Wu JS, Jhang YY, Huang WC, Ko CY, Shen SC. 2020. Identification of bioactive components from *Ruellia tuberosa* L. on improving glucose uptake in TNF- $\alpha$ -induced insulin-resistant mouse FL83B hepatocytes. Evid-Based Complement Altern Med 2020: 6644253. DOI: 10.1155/2020/6644253.
- Yajid AI, Ab Rahman HS, Wong MP, Zain WZ. 2018. Potential benefits of *Annona muricata* in combating cancer: A review. Malay J Med Sci 25 (1): 5. DOI: 10.21315/mjms2018.25.1.2.
- Yap KM, Sekar M, Seow LJ, Gan SH, Bonam SR, Rani NN, Lum PT, Subramanian V, Wu YS, Fuloria NK, Fuloria S. 2021. *Mangifera indica* (Mango): A promising medicinal plant for breast cancer therapy and understanding its potential mechanisms of action. Breast Cancer: Targets Ther 13: 471. DOI: 10.2147/BCTT.S316667.
- Yoese BR, Setyawati D, Muflihati. 2019. Jenis tumbuhan hutan yang dimanfaatkan sebagai bahan kerajinan oleh Suku Dayak Tamambaloh Desa Labian Kecamatan Batang Lupar Kabupaten Kapuas Hulu. Jurnal Hutan Lestari 7 (3): 1254-1263. DOI: 10.26418/jhl.v7i3.37399. [Indonesian]
- Yonathan M, Kaleab A, Ashenafi A, Franz B. 2006. In vivo anti-inflammatory and antinociceptive activities of *Cheilanthes ferinosa*. J Ethnopharmacol 108 (3): 462-470. DOI: 10.1016/j.jep.2006.06.006.
- Yu C, Jinwei C, Li H. 2013. A study on the antitumor effect of total flavonoids from *Pteris multifida* Poir in H22 tumour-bearing mice. 2013. Afr J Tradit Complement Altern Med 10 (6): 459-463. DOI: 10.4314/ajtcam.v10i6.11.
- Zayed MZ, Samling B. 2016. Phytochemical constituents of the leaves of *Leucaena leucocephala* from Malaysia. Intl J Pharm Pharm Sci 8 (12): 174-79. DOI: 10.22159/ijpps.2016v8i12.11582.